

» powerturf

SPORTEC® POWERTURF

HIGH DENSITY TUFT: COMPATIBLE WITH LIGHT TRAINING AND HEAVY DUTY USE



SPORTEC®

SPORTEC® powerturf application areas



fitness



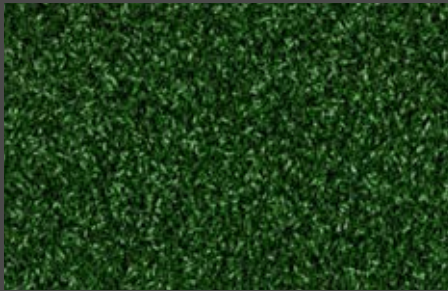
functional
training

Standard colours

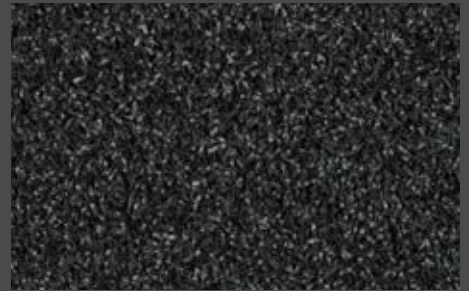
green



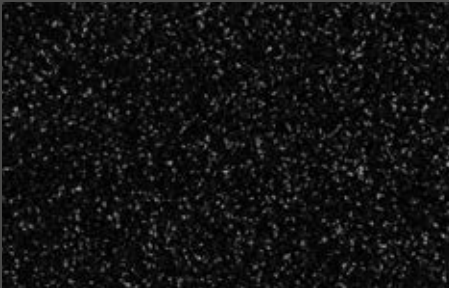
dark green



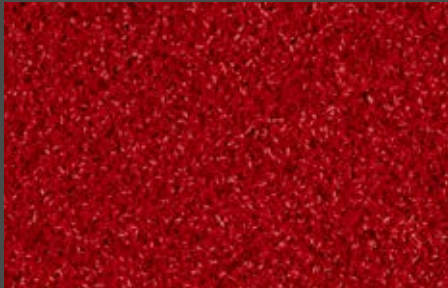
dark grey



black



red



dark red



blue



» **MORE** FROM YOUR FLOOR

» **MORE** good reasons to choose SPORTEC® powerturf:



Dtex 8000



colour options



100% customisable



resilient and robust



slip resistance



extremely durable



easy installation and maintenance



protection of the joints



protection of substrate



SPORTEC® powerturf 1.0 / 2.0 / 3.0

THREE DIFFERENT LAYOUTS AVAILABLE IN SEVEN STANDARD COLOURS



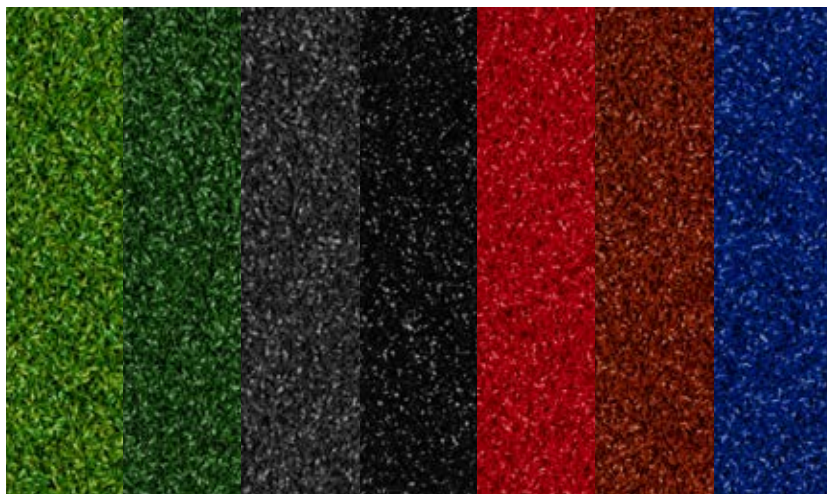
powerturf 1.0



powerturf 2.0



powerturf 3.0



Material

Surface: Polyethylene fibres, 100% monofilament (without infill)
Underside: Support fabric: 100% polypropylene and latex

Colours

7 standard colours available

Roll width

2,000 mm (± 1 cm)

Roll length

15.0 m (± 2 cm), other lengths are available on request in 5m steps (e.g. 20.0 / 25.0 / 30.0 m)

Pile height

13 mm ($\pm 10\%$)

Area weight

3,500 g/m² ($\pm 10\%$)

Stitch rate (10 cm¹)

36/10 ($\pm 10\%$)

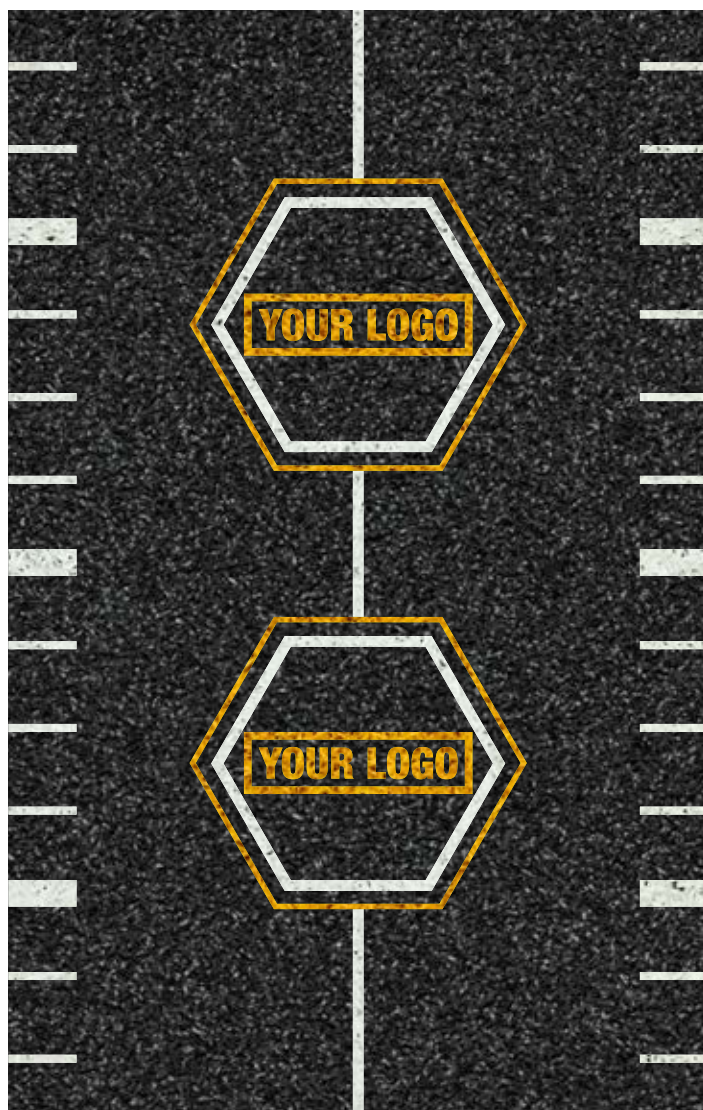


SPORTEC® powerturf 4.0

CREATE YOUR OWN DESIGN – FULLY CUSTOMIZABLE WITH 19 COLOURS



powerturf 4.0

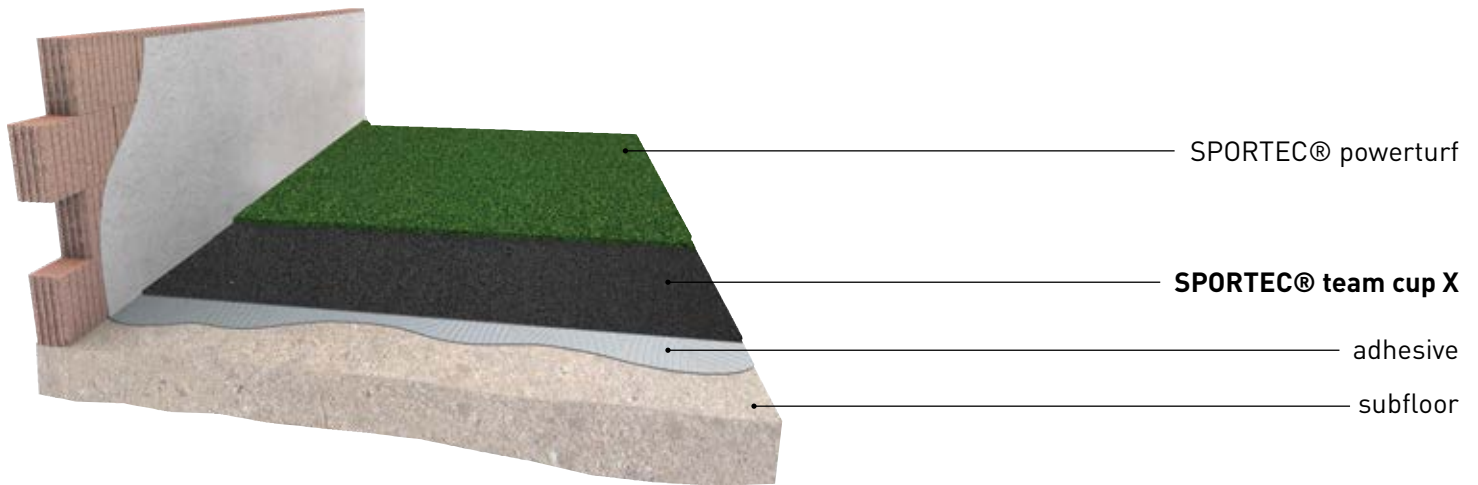


Material	Surface: Polyethylene fibres, 100% monofilament (without infill) Underside: Support fabric: woven polyester and latex
Colours	19 colours available
Roll width	2,000 / 4,000 mm (± 1 cm) [other widths upon request]
Roll length	15.0 m (± 2 cm), other lengths are available on request in 5m steps [e.g. 20.0 / 25.0 / 30.0 m]
Pile height	13 mm ($\pm 10\%$)
Area weight	2,500 g/m ² ($\pm 10\%$)
Stitch rate (10 cm¹)	30/10 ($\pm 10\%$)



SPORTEC® team cup X

HIGH PERFORMANCE UNDERLAY FOR SPORTEC® POWERTURF



SPORTEC® powerturf

SPORTEC® team cup X

adhesive

subfloor



Material	A mixture of black recycling rubber granules bonded with polyurethane elastomer
Roll width	1,250 mm (± 1.5%)
Thickness	8, 10, 12, and 15 mm (± 0.3 mm)
Roll length [m/bei Thickness mm]	15/8, 12/10, 10/12, 8/15 (± 1.5%)
Tensile strength	min. 0.2 N/mm ² (EN ISO 1798)
Elongation at break	min. 35% (EN ISO 1798)

» **MORE FROM YOUR FLOOR**

- additional comfort for athletes under SPORTEC® powerturf
- extra protection of the subfloor
- ideal impact sound insulation



SPORTEC® sports flooring for fitness centers and weight lifting areas



Cardio



Fitness



Weight-lifting



Functional training

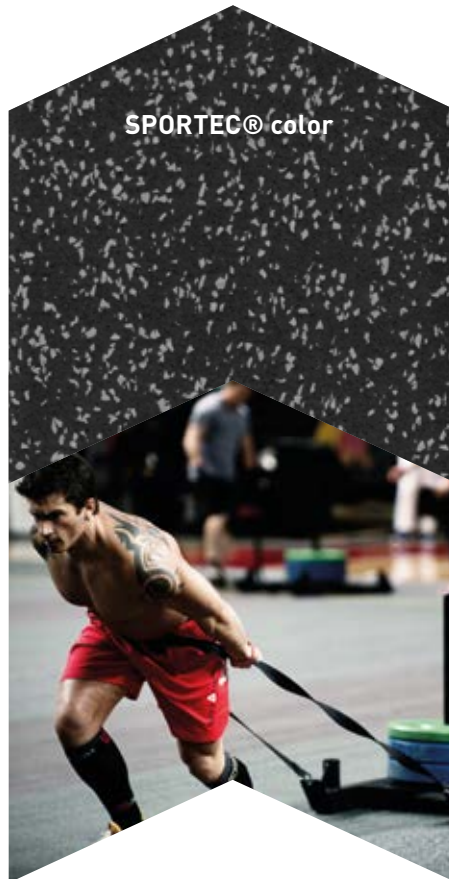
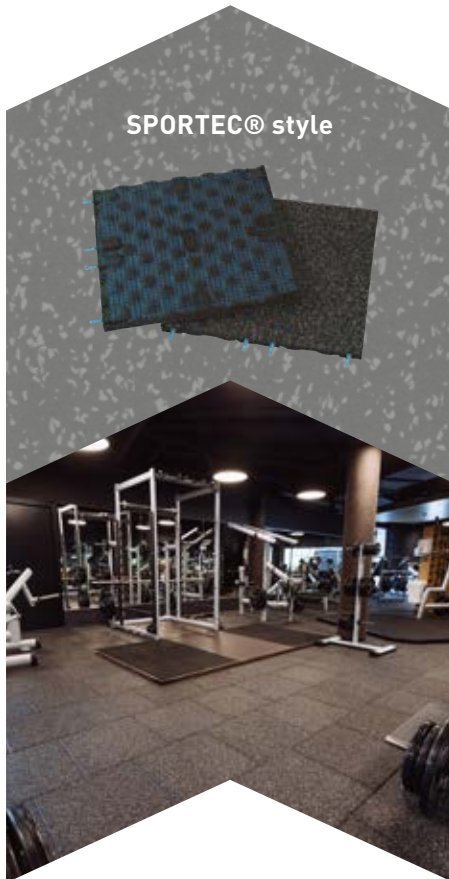


Yoga, pilates & rehabilitation



Aerobic

Find out more about our other fitness products in our SPORTEC® brochure:



» **MORE FROM YOUR FLOOR**

SPORTEC®

Sports flooring and elastic layers
made from rubber granules

KRAIBURG Relastec GmbH & Co.KG
Fuchsberger Straße 4 · D-29410 Salzwedel

Sales International:
Tel. +49 (0) 8683 701 -340
Fax +49 (0) 8683 701 -4340
sportec@kraiburg-relastec.com
www.sportec-flooring.com

No liability accepted for errors or omissions. Subject to changes without prior notice.
© KRAIBURG Relastec GmbH & Co. KG 2020

 **qualityaustria**
SYSTEMZERTIFIZIERT
ISO 9001:2015 NR. 00186/0
ISO 50001:2011 NR. 00070/0

