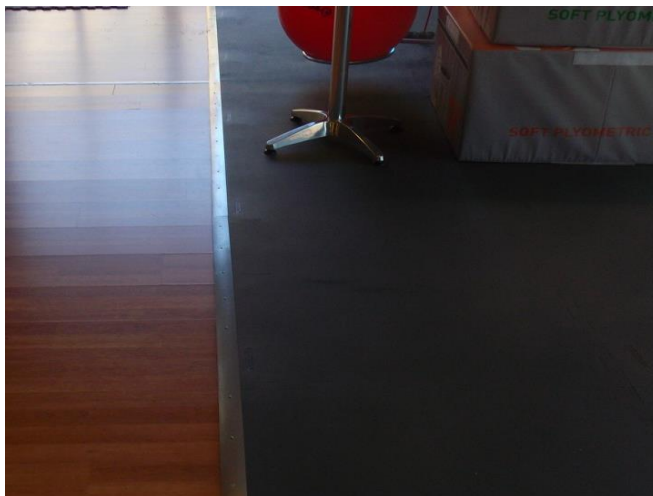


**1. Substrate**

A substrate made of concrete, poured screed substrate (free of dust) as well as already existing floor coverings with a levelled surface are suitable for the installation. In case of substrates with existing grooves / joints (e.g., ceramic tiles), it is necessary to level the surface with a leveling compound before starting installation. The substrate must be solid, leveled, dry, clean and free of cracks and of dust who can affect adhesion or the installation.



Even, suitable substrate made of laminate

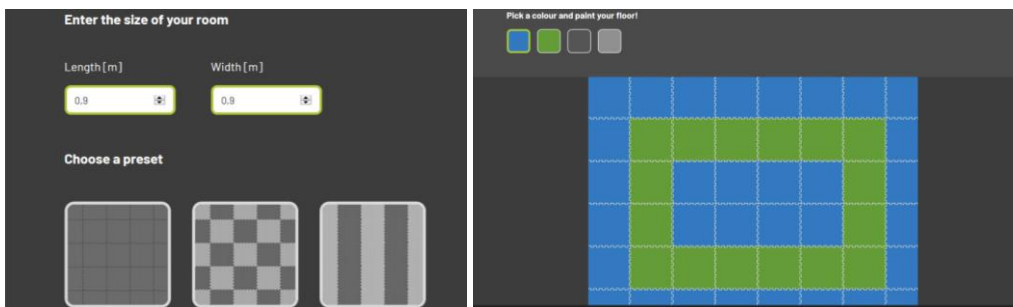


not suitable substrate

**2. Preparation Work**

The surface of the substrate has to be thoroughly brushed, clean and solid before starting installation. Minor unevenness must be levelled e.g. with an adapted liquid filler compound. The needed amount of **SPORTEC® motionflex** mats can be calculated at with the „motionflex-designer“ at the website of SPORTEC. Possible waste amounts have to be calculated within the needed amount. Below the link to the designer-tool:

<https://www.kraiburg-relastec.com/sportec/en/motionflex-designer/>



Input of key datas in the "motionflex-designer"

The installation recommendation is not subject to any change service! All information is without guarantee.

Latest version of this document available on [www.kraiburg-relastec.com/sportec](http://www.kraiburg-relastec.com/sportec)

Destack the mats from the pallet and lay down loose on the ground. Store them in the area you want to install for about 1-2 days before installation to ensure correct acclimation of the mats. The ambient temperature for storage and acclimatization of the mats should be in a range of 15°C and 25°C.

**3. Installation**

For a permanent installation of the area it is recommended to fix the mats with the substrate, e.g. with stripes of adhesive tapes. This prevents gaps within the area between the mats and slipping of the mats. Before laying the mats, measure and mark the lanes for the adhesive tape strips (double-sided adhesive tape) in the longitudinal and in the transverse direction. When the markings are finished stick the adhesive strips straight along the markings onto the substrate.



Measuring the lanes for the adhesive strips and application of adhesive tapes in longitudinal direction



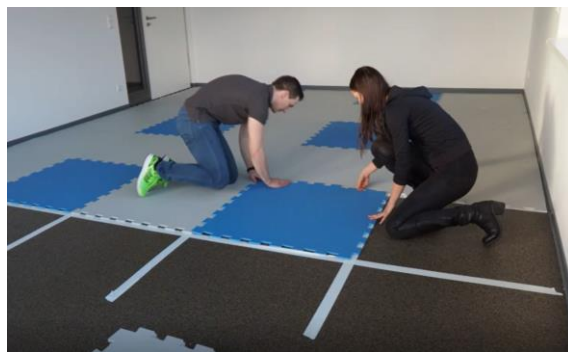
Pull-off foil of adhesive tapes in longitudinal direction, apply adhesive tapes in transvers direction

Start installation along a straight edge, e.g. a along a wall. Prepare the **SPORTEC® motionflex** mats to be applied to the wall by cutting the teeth away at the side that places at the wall to get a straight edge.

Place the mat along the wall at the intended location and fix it on the prepared adhesive strip. Place the next "prepared" mat, interlock the teeth of both mats together and fix the mat onto the substrate on the prepared adhesive tapes. Then mat for mat can be placed, interlocked and fixed on the prepared tapes.



Create a straight edge without teeth and lay the mats along the wall



Connect mat by mat and fix it to the floor

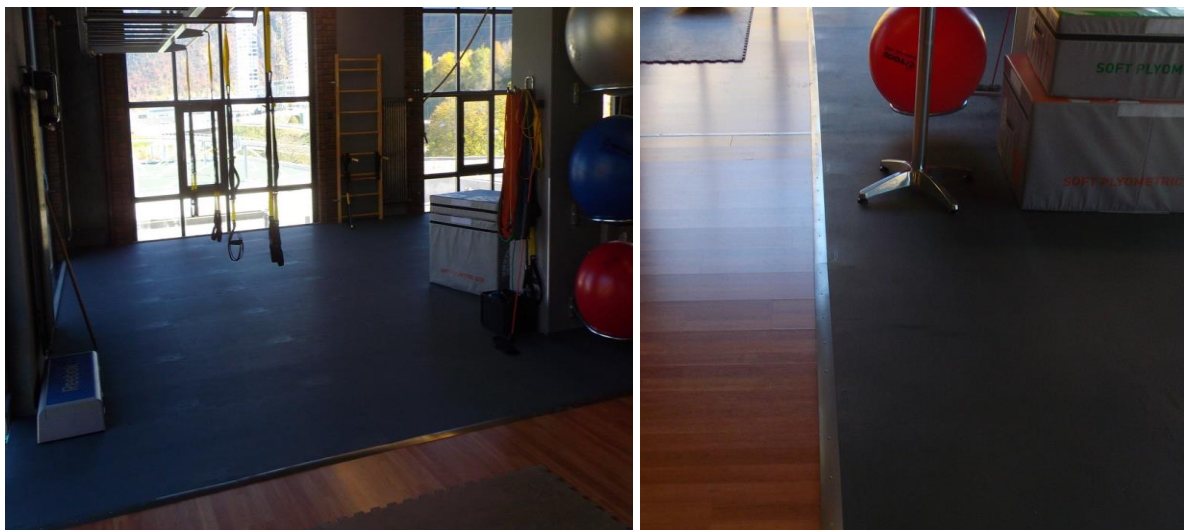
It is not necessary to glue **SPORTEC® motionflex** mats onto the substrate over the entire surface. Because of the interlocking teeth and the adhesive strips a slipping of the mats will be avoided. Also removing of the mats and installing at another place is easier when it is not fully glued.

Depending on the application, lines or markings may be needed at the ready installed flooring. Fix gluing tapes to mark the lines or markings at the surface. Apply the lines with a suitable line marking paint and a brush or paint roller on the surface. Then remove the tapes and let the line marking paint dry. When using line marking paint and gluing tapes pay attention and follow the manufacturer's instructions.



Ready installed area with a two color design

If the permanently installed surface is in the middle of a room and has open edges, an aluminum profile can be used as finishing. This prevents tripping hazards and protects the edges of the mats from damagings.



Profiles as border and finishing of the area

#### 4. Coating

It is not necessary to apply a coating on top.

The installation recommendation is not subject to any change service! All information is without guarantee.

Latest version of this document available on [www.kraiburg-relastec.com/sportec](http://www.kraiburg-relastec.com/sportec)

## 5. Important details

The flooring should only be installed on levelled, dry and clean surface.

The installation should be done in one working day, if possible, to ensure to have the same conditions for the whole installation.

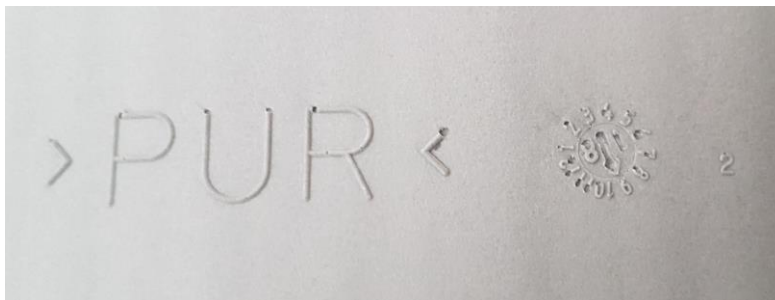
The mats can be split and cut with a cutter in any shape.

The surface can be tresspassed and used directly after installation.

In case of lines or markings are needed on the mats, use an adapted line marking paint, pay attention and follow the manufacturer's instructions and check the capability to the **SPORTEC®** floorings.

If line marking is applied, do not trespass the flooring before the paint is completely cured.

**In case of claims caused of falsely delivered goods, defect goods, insufficient quantities or other possible faults make a claim immediately and stop the installation directly. A claim of delivered material is only possible with untreated material and with declaration of the order number and the batch-no. (date stamp). The batch-no. is placed at the backside of the puzzle mat.**



Date stamp at the backside of the puzzle mat

### DISCLAIMER:

These recommendations for applications and installation are based on our extensive experience and on current technological practice. Our liability and responsibility in the event of damages shall be limited to the extent defined in our General Terms and Conditions of Business, regardless of the above recommendations or of any statements made or advice given by our sales representatives or applications engineering staff.